



## Accommodation Sheet

### General information

Accommodation name	HOTEL NAUTILUS
Typology	Hotel
Address	Via Mazzini, 45
City	Forte dei Marmi (Lu)
Contacts	+39 0584 787266 - +39 0584 787932 <a href="mailto:info@hotel-nautilus.com">info@hotel-nautilus.com</a>
Website	<a href="http://www.hotel-nautilus.com">www.hotel-nautilus.com</a>
WCAG 2.1 compliant accessible website	NO
Online bookings	YES
Short description	The Hotel Nautilus is a 3-star hotel, open all year round, located near the seafront of Forte dei Marmi.

TESTED AND REVIEWED BY: [Handy Superabile Social Promotion Association](#) in 2024

**Please note** The following information refers to the date of verification shown at the bottom of each sheet. **The Association** is not responsible for any significant changes made by the property after the visit.





---

## Summary

Accommodation sheet .....	1
General information .....	1
Arrival at the property.....	3
How to reach the property.....	3
Pathway from the private/public car park to the entrance .....	4
Entrance to the structure.....	4
Hall - Reception .....	6
Rooms/apartments .....	7
Rooms/apartments adapted for guests with reduced mobility.....	7
Toilet facilities in the guest room for guests with reduced mobility.....	9
Bar/restaurant .....	11
Internal pathways and common services .....	13
Internal pathways.....	13
Communal toilets .....	13
Medical practices/healthcare facilities.....	15





## Arrival at the property


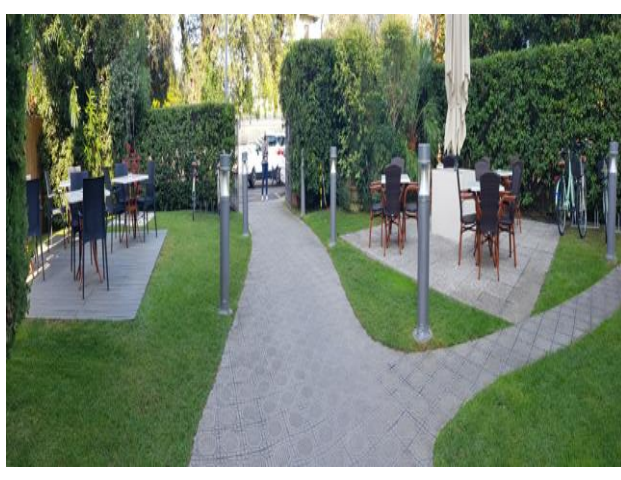
### How to reach the property

By car	<p>FROM GENOA: A12 motorway southbound Versilia exit.</p> <p>FROM MILAN: A1 motorway southbound near Parma take the A15 to La Spezia where you take the A12 southbound to the Versilia exit.</p> <p>FROM FLORENCE: Take the A11 Firenze-Mare motorway to Lucca, then take the motorway link road to Viareggio heading north to the Versilia exit.</p> <p>FROM ROME: A1 motorway to Florence then take the A11 to Lucca, then take the motorway link road to Viareggio northbound until the Versilia exit.</p>
By plane	The nearest airport to the Hotel Nautilus is the G. Galilei airport in Pisa which is about 45 km away
Assistance service for people with disabilities	YES
Embarkation/disembarkation of passengers with reduced mobility	with courtesy chair and ambulift /Finger
Tactile paths for the blind and visually impaired	YES
There is a toilet room accessible with grab handles	YES
By train	
Nearest station	Railway station. Querceta / Seravezza 5 km away
Assistance service for people with disabilities	NO but it is planned in the stations of Massa and Viareggio, respectively 11 and 18 km away.





### Pathway from the private/public car park to the entrance

Presence of private parking	NO
Public parking nearby	YES
Type of flooring in the public car park	asphalt
Presence of parking space reserved for people with disabilities in the public parking lot	NO
Describe the route from the car park to the entrance and any critical issues	flat
	

### Entrance to the structure

There is an accessible entrance	YES main entrance
How to access the structure	<input checked="" type="checkbox"/> via a double ramp with an intermediate parking shelf, 824 cm long, 90 cm wide, 8% slope.
Type of entrance door	2-leaf



Project promoted by



Regione Toscana

Useful width of door/entrance gate

81 cm per door



Project carried out with the contribution of the



Presidenza del  
Consiglio dei Ministri  
Ministro per la disabilità



## Hall - Reception

How to reach it from the entrance	flat
Reception desk height	bench over 100 cm
Presence of multilingual staff	YES
Type of information material	<input type="checkbox"/> YES with maps/tactile signals <input checked="" type="checkbox"/> YES with brochure
Initial assistance is provided for visitors with disabilities	<input type="checkbox"/> YES with orientation tour of the structure <input type="checkbox"/> YES with room accompaniment <input type="checkbox"/> YES with porter service
The following aids are provided for visitors with disabilities	<input type="checkbox"/> manual wheelchair <input type="checkbox"/> Crutches <input type="checkbox"/> Comfortable shower chair
The staff followed a training course on welcoming people with different disabilities	NO
Eventual notes	Hotel Nautilus would like to inform you that it pays the utmost attention to the health of its guests, carries out the certified sanitization of the structure with ozone in the common areas 2 times a day and in the rooms every time at the customer's departure





## Rooms/apartments

### Rooms/apartments adapted for guests with reduced mobility

Number and type of rooms/apartments equipped/usable by people with reduced mobility	triple rooms <input checked="" type="checkbox"/> No.2
Room access	<input checked="" type="checkbox"/> by elevator Door width 80
Entrance to the room	<input checked="" type="checkbox"/> flat
Type of entrance door	with knob handle
Usable width of entrance door	66.5 cm
Bed type and height	double bed 40 cm high
Free spaces on the sides of the bed	left 68 cm right Above 90 cm frontal 71 cm
Cabinet Type	with doors
Free space under the desk	67 cm
In-room options are available	<input checked="" type="checkbox"/> safe

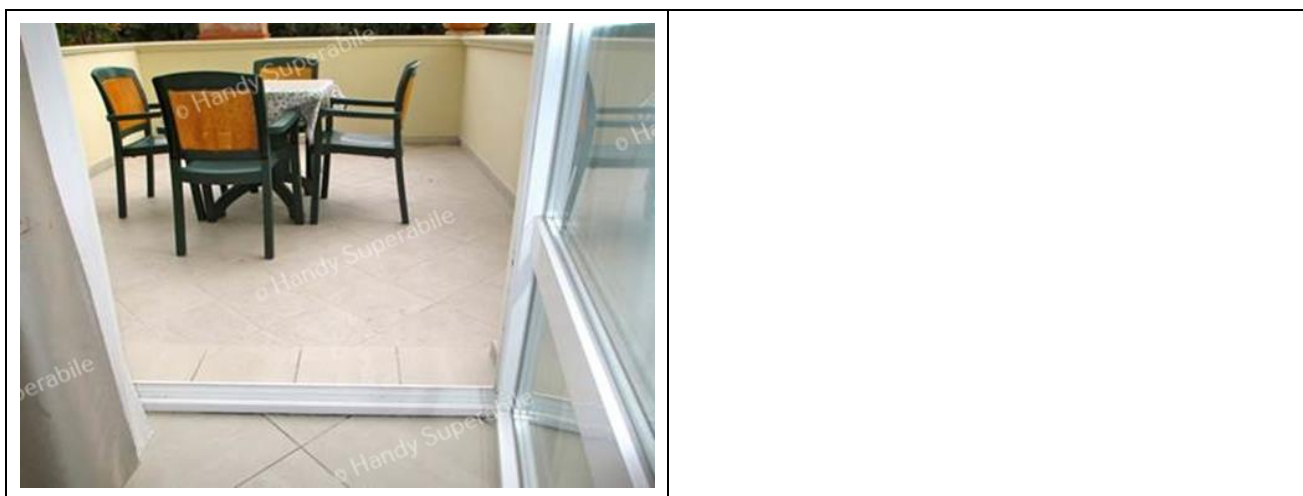
Project carried out with the contribution of the





	<input checked="" type="checkbox"/> minibar <input type="checkbox"/> Water Kettle <input type="checkbox"/> Iron
There is a terrace/balcony/garden (useful door width)	balcony/veranda with usable door width 68 cm
How to access	by threshold/guide 6 cm high and 4 cm wide
Eventual notes	The triple room visited n° 106
	





### Toilet facilities in the guest room for guests with reduced mobility

Access to the premises	flat
Usable width of the entrance door	75 cm
Type of door	with inwardly opening door
Type of handle	lever
Toilet height	43 cm
Toilet seat with open front tooth	NO
Support handles	Missing
Flexible shower on the side of the toilet	NO
Free space on the sides of the toilet	left 23 cm right 20 cm frontal Above 90 cm
Electric doorbell/telephone on the side of the toilet	NO
Washbasin with space underneath for wheelchair approach	60 cm
Height from the ground lower edge mirror	not sufficient for use by a person in a wheelchair





<p>Accessible shower available for guests with reduced mobility</p>	<p>YES flush with the floor</p>
<p>Type of shower</p>	<p>with sliding curtain</p>
<p>Shower chair</p>	<p>missing</p>
<p>Support handle</p>	<p>NO</p>
<p>Presence of shower head or sliding rails</p>	<p>Fixed shower head</p>
<p>Electric doorbell/telephone on the side of the shower</p>	<p>YES</p>





## Bar/restaurant

Type of venue	Bar/restaurant
Access to the premises	<input checked="" type="checkbox"/> flat
Useful width of door/entrance gate	Bar 80 cm. Restaurant above 90 cm
Bar counter height	Above 100 cm
Height of the buffet counter	76 cm high
Types of tables	With central support and square top.
Space under floor tables	Bar 71.5 cm, Restaurant 68 cm
Availability of high chairs for babies	YES
Multilingual menu	Not detected
Menu with app	Not detected
Braille menu	NO
Table service for people with disabilities	YES
Availability of foods for celiacs	<input checked="" type="checkbox"/> bread, pasta, biscuits, ice cream <input checked="" type="checkbox"/> <input checked="" type="checkbox"/> <input checked="" type="checkbox"/> <input checked="" type="checkbox"/> pre-packaged foods
There are coffee and milk dispensers	YES with button that can be reached by a seated person
A customer with reduced mobility can always reserve the same table	YES
There are toilets that can be used by a guest with reduced mobility (see "accessible toilets in the internal paths and common services)	YES
There is an area reserved for lunch for younger guests	NO
A fully equipped baby feeding service is available	Not detected





<p>The restaurant has an outdoor veranda / dehors</p>	<p>YES with access via the same entrance ramp to the hotel</p>
<p>Types of tables</p>	<p>with central support that can hinder approaching the wheelchair</p>
<p>Space under floor tables</p>	<p>65 cm</p>





## Internal pathways and common services

### Internal pathways

Eventual notes	The main common areas are accessible on the floor (lobby, restaurant, reception) while the rooms can be reached via an elevator located to the left of the reception. The door is sliding with a useful width of 80 cm.
----------------	---

### Communal toilets

Location of the venue	near the bar
How to access the premises	flat
Usable width of the entrance door	of the anteroom 73 cm and of the bathroom 74 cm
Type of door	with inwardly opening door
Type of handle	lever
Toilet height	43 cm
Toilet seat with open front tooth	NO





Support handles	Missing
Flexible shower on the side of the toilet	NO
Free space on the sides of the toilet	left 83 cm right 23 cm frontal 47 cm
Electric doorbell/telephone on the side of the toilet	NO
Washbasin with space underneath for wheelchair approach	60 cm
Height from the ground lower edge mirror	sufficient for use by a person in a wheelchair
Baby changing table	Not detected
	





## Medical practices/healthcare facilities

Hospitals near the property	Versilia Hospital Via Aurelia n. 335 - 55049 Lido di Camaio LU Tel +39 0584/6051
Any dialysis facilities	Dialysis service c/o Green Cross Viale Italice, corner. via Risorgimento Tel. +39 0584 84013
Other healthcare facilities	San Camillo Nursing Home Via Padre Ignazio da Carrara, 37, Vittoria Apuana Tel +3905847391

